



Enhancing Quality Assurance in South Asia



Co-funded by the
Erasmus+ Programme
of the European Union

Dr. Babasaheb Ambedkar Marathwada University, Aurangabad

Strategic Plan

*Dr. Babasaheb Ambedkar Marathwada University,
Aurangabad*

2020 - 2025

Remarks by Hon'ble Vice-Chancellor

It gives me an immense pleasure to present five year's strategic plan of Dr. Babasaheb Ambedkar Marathwada University, Aurangabad. In the academic year 2017-18, our University has drafted and formulated a comprehensive three phase (Short-Term for three years, Medium-Term for five years and Long-Term for ten years) Institutional Development Plan. This Strategic Plan is prepared as a blueprint of operational model for overall university. National Assessment and Accreditation Council (NAAC), Bangalore, an autonomous body of the University Grants Commission, Ministry of Human Resource Development (MHRD), New Delhi, that assesses and accredits Higher Education Institutions in India. NAAC in its revised guidelines has set up with seven pillars for quality education viz. Curricular Aspects, Teaching-Learning Evaluation, Research-Innovation and Extension, Infrastructure and Learning Resources, Student Support and Progression, Governance-Leadership and Management, and Institutional Values and Best Practices.

Dr. Babasaheb Ambedkar Marathwada University, Aurangabad has set up its plans by adopting these pillars as an ultimate goals of quality education. Refinement in the curriculum, strengthening the teaching-learning facilities, inculcating the quality research, augmentation of the infrastructural facilities, delivery of student-centric education, ideation of e-governance and strengthening ICT-based approach are the main objectives earmarked while setting up the Strategic Plan of the University.

This strategic plan would strive the University for achieving its vision of being an Epitome of Excellence by creating and imparting timely responsive quality education so as to achieve the highest benchmarks of the quality education in the Indian Education System.

With Regards,
Vice-Chancellor

Prologue

Dr. Babasaheb Ambedkar Marathwada University (BAMU), formerly **Marathwada University**, is located in the ancient lands of Aurangabad Caves, Aurangabad, Maharashtra. It is named after Bharat Ratna Dr. Babasaheb Ambedkar, an Indian jurist, political philosopher, academician and the chief architect of the Indian Constitution. The University was established primarily on the initiative of Dr. Babasaheb Ambedkar to facilitate the higher education facilities in the Western Vidarbha, Marathwada and North Maharashtra State. Shri Jawaharlal Nehru, the first Prime Minister of India, inaugurated Marathwada University on 23rd August, 1958 at the premises of the temporary main building of the University. National Assessment and Accreditation Council (NAAC), Bangalore has Re-accredited the University with 'A' grade in 2019 while the University secured 85th National Institutional Ranking Framework (NIRF) rank in 2019.

The University has contributed to the progress of adjoining regions and residents in innumerable ways. Presently, the University has 456 affiliated colleges under its jurisdiction, encompassing four districts from Marathwada (Aurangabad, Jalna, Beed and Osmanabad) of Maharashtra State.

The University campus is sprawled across 725 acres with a picturesque background of hills. University has grown from a leased building and evolved to huge landscape including several hostels for boys and girls and various centralized facilities. University has a 22-acre satellite campus at Osmanabad and a Marine Research Station at Ratnagiri in West Coast.

Knowledge Resource Centre (Central Library) of the University, best in its class, has set an out of the box instance in extending the resources beyond campus to quench the thirst of all walks. Symbolizing the truest essence of universal knowledge dissemination, the Campus provides 56 completely ICT enabled academic Departments along with 03 Research Centres and 01 Incubation Centre for research

and innovations. The UGC-Human Resource Development Centre is one of the best training institutes for the teachers. The University Grants Commission has provided financial assistance to five University Departments under support scheme of UGC-SAP. Similarly, Department of Science and Technology, Govt India has also provided financial assistance to four University Departments for augmentation of laboratory infrastructure for PG and research. University faculty members have published more than 2000 research papers in National / International journals of repute and university has 02 granted, 07 published and 20 submitted patents along with 10 granted copyrights to its credit during last five years.

The University has created an excellent network of coalition with national/international research bodies, institutions and industries for creation of knowledge contents that has best time relevance and world -class infrastructure. The Bajaj Incubation Centre, established under the support of Bajaj Auto Pvt. Ltd., Aurangabad, has proven itself as the choicest platform for spin-offs from University and institutions under its jurisdiction. Ramanujan Geospatial Chair and Maulana Azad Chair were established to promote high-end research in specialized areas. The University is providing excellent platform for overall development of the students in the sports and cultural activities including basketball, football, cricket, gymnasium, swimming, tennis, etc. The department of Dramatics in the campus is one of the leading Departments in the country for providing legendary personalities to the film industry like Varsha Usgaonkar, Makarand Anaspure etc.

Dr. Babasaheb Ambedkar Marathwada University has extensive list of registered alumni (occupied very important positions) which includes Sukhdeo Thorat, Nirupama Rao, Ravindra Gaikwad, Madhusudan Manikrao Kendre, Yogesh Shirsath, Janardan Waghmare etc. The tranquil campus of Dr. Babasaheb Ambedkar Marathwada University, Aurangabad, with bounty of nature at its divinity, waits to embrace all enthusiasts for knowledge. University has adopted a best practice in the form of its "Earn while Learn Scheme", to support economically under privileged

students. University possesses its own History Museum with unique valuable collection ranging from Paleolithic to Early Historic and from Early Medieval to Mughal and Colonial periods.

University in Nutshell:

- University campus is sprawled across 725 acres with a picturesque background of hills embedded with Aurangabad caves
- University has a 22-acre satellite campus at Osmanabad and a Marine Research Station at Ratnagiri in West Coast
- State-of-the-art Research Facilities wide instrumentation facilities at
 - i) Central Facility for Advanced Research and Training
 - ii) RUSA-Centre for Advanced Sensor Technology
 - iii) Paul Herbert Centre for DNA Barcoding & Biodiversity Studies
- National Resource Centre is approved by MHRD for imparting training to the teachers
- The University Grants Commission has provided financial assistance to five Departments under support scheme of UGC-SAP
- Department of Science and Technology, Govt. of India (DST-FIST) provided financial assistance of 2.62 Cr for the establishment of Science & Innovation Hub
- Innovation Ecosystem transforming from the Bajaj Auto Pvt. Ltd. sponsored Bajaj Incubation Centre; MHRD has sanctioned 10 Cr for the establishment of Atal Incubation Centre and Government of Maharashtra has also sanctioned Incubation Centre with total outlay of Rs, 5.0 Cr.
- Dedicated University Industry Interaction Cell, Placement Cell and Centre for International Relations

- Best-in-Class Knowledge Resource Center, Vibrant IQAC Cell
- 13 Study Chairs and Dedicated Departments for community engagement and extension activities
- 50% graduate outcome (As expected by UGC : Quality Mandate)

Achievements of the University:

- National Assessment and Accreditation Council (NAAC), Bangalore has Re-accredited the University with 'A' grade in 2019 with 3.22 CGPA (*An incremental achievement from 3.07 to 3.22*)
- 87th National Institutional Ranking Framework (NIRF) rank in 2016 and 85th in 2019
- 5th Rank for Ph.D Upload (2017)
- UGC Recognized Centre of Potential for Excellence in Rural Development
- University has 02 granted patents, 10 published and 20 submitted patents during last five years
- 93 functional MoUs with various national/international institutions

Vision

To structure The Dr. Babasaheb Ambedkar Marathwada University to be an Epitome of Excellence by creating and imparting time responsive Quality Education to address Changing Scenario, keeping Research and Development at its core, for 'Anyone' at 'Anytime' and 'Anywhere'

Mission

- To provide a platform for rural, women, socially disadvantaged and differently-abled groups to achieve Academic Excellence with in-built Employability.

- To carve out a fusion between Academics and Industry with an ultimate aim to identify the gaps and accordingly, design the courses to impart skill based education as per the requirements of the region so as to improve employability and develop entrepreneurial capabilities.
- To provide student centric learning environment and to establish platform for inclusive research leading to the development of creative thought process amongst research scholars keeping in mind societal needs.
- Nurturing innovative ideas shaping into products facilitating the spinoff and creating awareness to protect Intellectual Property (IP).
- To adopt a perennial process for bringing in excellence in teaching pedagogy by providing ICT based state-of-the-art infrastructural facilitation.
- To impart value added, culturally rich education by adopting the local to global approach
- To provide an academic corridor for cordial connectivity between the University and its affiliates.
- To ensure good Governance inculcating 'Accountability' based on 'Self-evaluation' amongst all the stakeholders of the University.

Core Values

Following core values guide the progress and promotion of student learning and success, faculty scholarship and research, and community engagement at Dr. Babasaheb Ambedkar Marathwada University:

- **Excellence:** Excellence in teaching, research, scholarship, creative endeavors, student services, and in all aspects of the University's operations is continuously pursued at Dr. Babasaheb Ambedkar Marathwada University to ensure institutional effectiveness and efficiency.

- **Integrity:** At Dr. Babasaheb Ambedkar Marathwada University, honest communications, ethical behavior, and accountability for words and deeds are ensured by all members of the University community
- **Respect:** Each individual at University campus is to be treated with respect and dignity and is to be treated equitably in all situations.
- **Diversity:** A broad diversity of people and ideas are welcome and supported at Dr. Babasaheb Ambedkar Marathwada University as essential part of quality education in a global interdependent society. Students will have reasonable and affordable access to a comprehensive range of high quality educational programs and services.
- **Innovation:** Dr. Babasaheb Ambedkar Marathwada University encourages and supports its faculty, staff, and students in all forms of scholarship including the discovery and application of knowledge in teaching and learning and in developing innovative products and processes.
- **Leadership:** Dr. Babasaheb Ambedkar Marathwada University seeks to provide rigorous academic curricula and challenging co-curricular opportunities to promote the development of leadership qualities in students and to facilitate leadership development among faculty, staff, and students.
- **Scholarship:** We believe that students and faculty should remain engaged in professional development and scholarly endeavors that promote the creation and application of knowledge in all disciplines.
- **Cultural Competence:** We believe that students should experience cultural activities as they grow in their appreciation for the diversity of ideas and peoples, both inside and outside the classroom.
- **Value Based Education:** We are committed to inculcate values of life amongst the students in order to induce honesty, integrity, encouraging and building

student ability, character, creativity and develop the responsible citizens of the country.

- **Inclusiveness:** Since, University has the diverse backgrounds and is being valued in a group of society where we are committed to treat all as part of our stakeholders.

Strategic Scan

The External Environment

Dr. Babasaheb Ambedkar Marathwada University (BAMU), formerly Marathwada University, is located in Aurangabad, Maharashtra, Republic of India. It is named after Bharat Ratna Dr. Babasaheb Ambedkar, an Indian jurist, political leader, academic and the chief architect of the Indian Constitution. The University has contributed to the progress of adjoining regions and people in innumerable ways. Since its inception, the university has around 456 colleges affiliated to it, which come under four districts (Aurangabad, Jalna, Beed and Osmanabad) of Maharashtra State. The student population exceeds 4,44,336. Most of the students are hailing from the rural background. Therefore, to foster the overall educational growth of the Marathwada Region is the major challenge University keeps on a front.

New Education Policy of India:

- **India moves towards becoming**
 - **A true knowledge society**
 - **Economy**
 - **Preparing for Forthcoming fourth industrial revolution**
 - **Increased Employment opportunities**
 - **More for Skilled Jobs of Creative and Multidisciplinary nature**
 - **Education system be ready to cater increased GER with proper support**

Institutional Restructuring & Consolidation

A new vision and architecture for higher education has been envisaged in the Policy with large, well-resourced, vibrant multidisciplinary institutions.

- Consolidation of current 800 universities and 40,000 colleges into about 15,000 large, well-resourced, vibrant multidisciplinary institutions
- All higher education institutions to be consolidated into three types of institutions:
 - Research Universities - equal focus on research and teaching
 - Teaching Universities - primary focus on teaching with significant focus on research
 - Autonomous degree-granting colleges - almost exclusive focus on teaching
- Significantly expand reach and capacity while building strong educational communities
- All higher education institutions to become multidisciplinary institutions, with teaching programmes across disciplines and fields
- Mission Nalanda and Mission Takshashila launched to catalyze new architecture
- High quality institutions in disadvantaged geographies a priority
- Substantial public investment

The Internal Environment

Dr Babasaheb Ambedkar Marathwada University is a State University established and funded by the Government of Maharashtra. It runs with Post graduate courses in Arts, Commerce, Management, Science and Vocational Education streams. One department is running a course in Engineering which is at UG and PG level. Vocational education is also at both the levels.

The University has adequate teaching/non-teaching staff for maintaining the academic balance of the region. Moreover, University has grown up with the extraordinary infrastructural and learning resources. University has created a well-versed ecosystem for promoting the research and innovation culture by establishing the state-of-the-art research facilities through Research Centres and Incubation Centre.

University Grants Commission (UGC), an apex body in education, has published a quality mandate for Universities in India. Further, it is mandatory for the

Universities to get accredited from National Assessment and Accreditation Council (NAAC). Hence, while designing the strategy plan of the University, it is necessary to implement quality standards specified by both UGC and NAAC along with the local need, which is a primary duty of the University.

A gist SWOT analysis is given as below followed by further details of it.

Gist of SWOT analysis:

Strengths

- Qualified and dedicated staff having research experience
- Adequate Infrastructure & state-of-the-art research facilities and funded projects
- Excellent Knowledge Resource Center
- Continuous evaluation and monitoring System
- Research, Innovation & Extension
- Gender Equality in Education
- Provisions for the financial support for students of under privileged sections of society
- Well-established International Collaborations and Linkages

Weakness

- Students from economically backward classes
- Insufficient financial support from Government for development
- Vacancies due to superannuation of faculty
- Under developed Industrial zone
- Student-Teacher ratio
- Diversity in Faculty recruitment

Opportunities

- University Industry Linkages and increasing non-government fundings for research, innovation and extension
- Increasing Research Components & Collaborative programs
- Skill based curriculum and Entrepreneurship Development
- Attracting more foreign Students
- Consultancy and research program enhancement
- Creation of employability for students
- Uplifting International Relations

Threats

- Emerging of Private Universities and other educational Institutes
- Brain Drain to metro cities
- Drought prone zone

The details of the above can be seen in following contents.

Institutional Strength in detail:

1. Campus with natural beauty sprawled across 725 acres with a picturesque background
2. Catering to socially and economically deprived students providing higher education at affordable cost. 'Earn While Learn' Scheme to support economically under privileged students
3. Excellent blend of cutting-edge and traditional academic programmes
4. Committed and proactive teaching and administrative staff working in 52 academic departments

5. Academic Autonomy to all Departments since 2006-07 with Choice Based Credit System (CBCS) for all undergraduate and postgraduate programmes in the campus since 2011-12.
6. OBE (Outcome Based Education) curriculum for 57 of the academic programmes
7. Adequate number of Major Research Projects supported by University Grants Commission (UGC), Department of Science & Technology (DST), Department of Biotechnology (DBT), Council of Scientific and Industrial Research (CSIR), Defense Research and Development Organisation (DRDO), Department of Atomic Energy and Board of Research in Nuclear Sciences (DAEBRNS), All India Council for Technical Education (AICTE) etc to Research Centers viz RUSA- Centre for Advanced Sensor Technology and Paul Herbert Centre for DNA Barcoding & Biodiversity Studies with state-of-the-art research infrastructure
8. The Bajaj Incubation Centre, Atal Incubation Centre and MSInS Incubation Centre supported by the Government of Maharashtra.
9. State-of-the-art facilities in the cutting-edge areas in most of the Science Departments
10. More than 800 research papers in SCOPUS indexed Journals during last five years
11. 02 granted, 07 published and 15 submitted patents during the last five years
12. 93 Functional MoUs with national/international research bodies / institutions
13. Nodal Centre for EUPHATES (Erasmus + Mundus) programme of European Universities
14. Dedicated University Industry Interaction Cell (UIIC), Training and Placement Cell , 'Avishkar' and Intellectual Property Rights (IPR) Cell

15. Ramanujan Geospatial Chair and Maulana Azad Chair to promote high-end research in specialized areas such as geospatial technology, remote sensing, geographic information system (GIS), journalism, secularism and socialism
16. Trend setter in Skill based Education; B. Voc and M. Voc in Industrial Automation and Automobile Technology
17. One of the best Knowledge Resource Centres (Central Library) in the country
18. 285 state / national awards for sports (including basketball, football, cricket, gymnasium, swimming, tennis, etc.) and cultural activities
19. Highest number of Rajiv Gandhi Fellowships and National Eligibility Tests (NET) Junior Research Fellowships (JRF) qualified candidates
20. Dedicated Centre (UNIC) for Networking, data management, university website maintenance and IT Management
21. Vibrant Internal Quality Assurance Cell (IQAC)
22. National Resource Centre (NRC) approved by MHRD for Science & Technology with special emphasis on Computer Science & IT.
23. Instituted 13 Study Centers (Chairs) for community engagement programmes
24. 50% graduate outcome (As expected by UGC : Quality Mandate)

Institutional Weakness in detail

1. Vacant teaching positions
2. Less number of out of state teachers against sanctioned posts
3. Limited funding by the non-government sources such as industry, corporate houses, international bodies, endowments.
4. Limited demand ratio for some of the social science programmes
5. Limited number of teachers are generating revenue under consultancy
6. Limited number of academic Departments using Learning Management System (LMS)
7. Limited financial contribution by Alumni

Institutional Opportunity in detail

1. Expansion of buildings for new Academic Departments and Research Centers at main campus as well satellite campus at Osmanabad
2. Improvement of social and economic status of the socially and economically disadvantaged group of the students through employability focused courses having combination of cutting-edge technology and local needs
3. Tapping more funding under various schemes of UGC, DST, CSIR, DRDO, DAE-BRNS, AICTE / Ministry of Environment & Forest, Ministry of Food Technology, MODROBS, ICSSR, UGC-SAP and DST-FIST etc
4. Initiation of multidisciplinary academic programmes by forming various academic clusters in the University campus
5. Seeking grants under the scheme of Centre with Potential for Excellence in Particular Area by forming clusters in the University, based on research strength of various Departments
6. Generation of more number of IPR through University students and faculty members
7. Tapping funding from national and international funding agencies under various collaborative schemes
8. Attracting higher numbers of foreign students for various Postgraduate and research programmes in the University campus through student exchange programmes
9. Identification of societal issues and problems in the Industries and encouraging students and faculty members to address these issues through well-planned research initiatives.
10. Arranging more number of 'Training of Trainer' program and faculty exchange with Industries Entrepreneurship Development Generation of revenue through Alumni Association.

Institutional Challenges in detail

1. Keeping pace with changing technology and pedagogical innovations in teaching learning process and research
2. Timely recruitment of teachers against sanctioned posts
3. Attracting faculty from other states for recruitment in the University for various positions (Professor / Associate Professor / Assistant Professor)
4. Attracting students for some of the social science programme
5. Attracting students from out of the states and country
6. Generating revenue under consultancy and corporate training Making 100 % digital university

Strategic Objectives

Formulation of development objectives, directives and guidelines with specific plans for implementation by aligning the academic and administrative aspects improves the overall quality of the institutional provisions. Dr. Babasaheb Ambedkar Marathwada University, Aurangabad has therefore stated its strategic objectives along with its QA Strategy for the implementation as follows:

(i) Curricular Aspects

As mentioned above, curriculum is designed keeping in view the instructions and suggestions given by UGC and NAAC. Also, local needs of the society and the Industry are well taken care of. Pedagogy of outcome based education is being followed.

- Based on survey and success of pilot projects, new programme will be introduced

- Identification of commercial market to support entrepreneurial acumen and excellence
- Identification of industries to start joint academic program to address national/ global demands
- Curriculum based on Outcome Based Education framework implemented
- Continuous refinement in teaching learning process based on rigorous analysis of feedback by implementing the feedback collection from various stakeholders, analysis of feedbacks at the Departmental and Central IQAC level, accordingly planning and implementation of actions based on the analysis

QA Strategy:

- Strengthening the feedback mechanism of the institution by collecting the feedbacks from all the stakeholders (students, teachers, parents, employers and alumni)
- Feedback analysis and according actions on the same.
- Involving regional industry partners in the curriculum revision process
- Curriculum enrichment with activities relevant to the value-addition, integration of cross-cutting issues relevant to professional ethics, gender, human values, environment and sustainability

(ii) Teaching-Learning and Evaluation

The University is striving to provide best class education to the students. Maximum of the Departments are conducting Post Graduate Courses. The Departments, after enrollment of the students, conducts bridge courses to help the students to be in tune with the environment. Identification of slow learners

and fast learner starts from there itself. Mentee- Mentor system is followed. Mentor solves maximum issues the students are facing. Further, slow learners are provided with extra guidance by the concern teacher and the fast learners are motivated by extra assignments, projects and learning material. Knowledge Resource Center of University (KRC), a Library, provides best teaching and research material to the students and the teachers. It have more than 3,67,000 books, 4200+ manuscripts, 20 various online databases, 15000+ e-Journals, 137000+ ebooks, Classrooms are equipped with IT infrastructure. First MOOC course under SWAYAM initiative of Government of India, a platform for MOOC development, is developed in the University which in its first go was registered by more than 450 participants.

Accordingly following practices are followed:

- Refinement and progression in enhancing student enrolment
- Student centric academic activities, identification of Slow learners and Fast Learners
- Strengthening teaching pedagogies through teachers equipped with concepts for changing demands of hour, use and development of MOOC courses
- Reformation through analysis of all evaluation processes including IT integration and measurement of learning outcome

QA Strategy:

- Initiation of bridge, induction, remedial courses,
- Adoption of latest technology in teaching-learning with ICT Familiarization and pedagogical innovations
- Systematic and fair evaluation of student outcomes etc.

- Uplifting the Admission Process, Catering to Diverse Needs of Teaching-Learning Process, Teacher Quality, Evaluation of Teaching, Evaluation of Learning and Evaluation Reforms
- Keeping track on the Course Outcomes, Programme Outcomes, Programme Specific Outcomes at the Departmental and Central IQAC Level.

(iii) Research, Innovations and Extension

University provides the best research ecosystem for the research in Arts, Humanities, Management, Science, Technology etc. University has 4000+ manuscripts of Mahanubhav tradition (*also known as **Jai Krishni Pantha**, refers to the Hindu sects in India, started by Shri Chakradhar Swami (or Chakradahrara) in 1100-1200*), 200+ manuscripts of Devi Suktas, 18th Century copy of ancient Hindu literature, rich History Museum having various sculptures, historic documents, silver and gold historic coins, utensils, paintings etc. This material is basically extracted from the excavation sites of Bhokardan (*ancient name Bhogvardhan, a small town in Aurangabad District of India*), Ter (*ancient name Tagar, a small village in Aurangabad District of India*) and Paithan (*ancient name Prathisthan, a small town in Aurangabad District of India*) which were ancient civilization on a famous Silk route.

All the science and technology departments are well equipped with research labs and many research scholars are working in it. Some of the laboratories are Paul Herbert Center for DNA Barcoding and Biodiversity, a unique center working in the area and providing consultancy to many south Asian countries like Nepal and Sri-lanka, RUSA Center for Advance Sensor Technology, Center for Coastal and Marine Biodiversity and Center with Potential for Excellence in particularly in Rural Research. University has recently established Gopinathrao Mundhe National Institute of Rural

Development and Research especially for research in rural development aspect. Further University has established 13 study centers.

All the rare books of library and history museum are in digitization process and some are available forever in digital format and research scholars and book lovers who wanted to see rare collection can make a good use of digitization without damaging original copies. Around 1000+ rare books & 4000+ Theses digitized in the first phase users can get this intellectual asset by a single click. The University provides best in a class environment for the research.

Department of Science and Technology, Govt. of India (DST-FIST) provided financial assistance of 2.62 Cr for the establishment of Science & Innovation Hub Innovation Ecosystem transforming from the Bajaj Auto Pvt. Ltd. sponsored Bajaj Incubation Center; MHRD has sanctioned 10 Cr for the establishment of Atal Incubation Center and Government of Maharashtra has also sanctioned Incubation Centre with total outlay of Rs, 5.0 Cr.

University is still striving for:

- Augmentation and promotion of societal research
- Augmentation and promotion of industrial research
- Development of an Innovation Ecosystem
- Establishment of Centers of Excellence (COEs)
- Creation of community responsive campus

QA Strategy:

- Promotion of research activities and mobilization of funds
- Ideation of IPR Workshops and Start-up Opportunities

- Revenue generation through consultancy and corporate trainings
- Uplifting National/International linkages/collaborations for enhancing the funding, student-teacher exchange, joint publications etc.

(iv) Infrastructure and Learning Resources

University have a main campus of 725 acre (293 hectars) at Aurangabad, sub-campus of 60 acre (25.5 hectars) at Osmanabad District of India and a research center of 2.1 acres (0.8 hector) at Ratnagiri District of India having built up area of 39300 sq meter 4700 sq meter and 4500 sq meter respectively. University has leased its land of 50 acres to Sports Authority of India and 100 acres land to National Institute of Electronics and Information Technology, a venture of Ministry of IT, Government of India. These two Institutions are extending their support to University students in various ways.

The campus is well connected by Giga Bit fiber connectivity of around 14 kms and have Internet bandwidth of 1:1 1000MBPS from Bharat Sanchar Nigam Limited and 1GBPS shared connectivity National Knowledge Network. University Network and Information Center of University is providing IT support to the campus and developing software as per requirements of University.

- Creation of modernized physical facilities
- Creation of state of the art technical facilities
- Creation of e-resources and extension for learning horizon

QA Strategy:

- Adequacy and optimal use of the facilities available in the institution

- Suggestive measures for maintaining the quality of the academic and infrastructural aspects in the campus
- Augmentation of physical facilities, maintenance of the present infrastructure
- Enriching library as a learning resource, computers as learning resources and other facilities

(v) Student Support and Progression

University is entrusted in providing the support to its students by providing various scholarships, fellowships, concession in fees especially for students from economically weaker sections. University has 12 best-in-class hostels for students and very recently University has established a dedicated hostel for overseas students. A noteworthy scheme of the University is “Earn & Learn Scheme”, which itself is a platform for ideation of entrepreneurship amongst the students. Since the University is operational in a draught prone region, the special schemes of offering scholarships for such affected students is being implemented. Pre-IAS and NET, SET Coaching Centre is a milestone for delivering the competitive examinations training to the students from the University and its affiliates.

University is now looking for:

- Provision for special student support
- Promoting competitiveness and research aptitude among undergraduate and postgraduate student
- Enrichment of student centric activities
- Strengthening Career counseling and placement activity

QA Strategy:

- Providing various Scholarships/Fellowships
- Guidance for the competitive examinations, soft skills development etc.
- Ideation of placement drives and on-campus/off-campus drives
- Conduction of Sports/Cultural Activities
- Involving Students/Alumni in the academic/administrative activities

(vi) Governance, Leadership and Management

For the case of Governance, Leadership and Management, University is functioning as per the common procedure laid in Maharashtra Public Universities Act of 2016. University has qualified and competent administrative staff to provide effective governance, leadership and management at all levels of its operations and execution. University ensures the inclusiveness of all faculty members in various committees and decentralization in all levels of administration. As per provision(s) of University Act, organisational structure is well-defined and as per Statutes and Ordinances, University ensures participative management for effective decision making. Well documented short term, medium term and long term strategic plan aligned with University's Vision, Mission is in place and is deployed across the University. University organizational structure helps in sustaining institutional capacity and education effectiveness through involvement of stakeholders in Committee/ Boards at various levels.

University is currently for the:

- Creation of brand equity model in higher education
- Promotion of quality culture by adopting the e-governance, participative management, strategic planning and its implementation

- Inclusive Management

QA Strategy:

- Strategy planning through creating a Short-Term, Medium-Term, Long-Term Action Plan
- E-Governance, Human Resource Planning and Talent Acquisition
- Performance Appraisal, Staff Development Programmes
- Resource Mobilization and Advancement in Finances
- Internal/External Audits (Academic/Administrative)
- Strengthening the Quality Assurance Cell

(vii) Institutional Values and Best Practices

University is sensitive in awareness of the gender sensitivity and parity. University is conducting various gender promotional schemes, programmes through its dedicated Tarabai Shinde Womens Study Center. University is committed to adopt environment-friendly policies in regards with the tree plantation, waste management, use of solar water heating system, use of renewable energy resources and water harvesting.

University celebrates all important days of national/international importance and conducts large number of activities to promote universal values. University maintains complete transparency by involvement of all stakeholders in financial, academic, administrative and auxiliary functions.

Following are the targeted sectors to work-out in a larger extent:

- Practicing initiatives of gender and social equity, social awareness for empowerment of women and socially disadvantaged groups

- Practicing environmental consciousness and sustainability initiatives for ensuring clean and pollution free environment
- Practicing human values and professional ethics initiatives for creation and universal values and integrity among all stake holders of the University

QA Strategy:

- Promotion of the gender and equity schemes, planning and implementation for green initiatives, waste management, value-based education, social responsibilities, citizenship roles and overall institutional ambience and initiatives

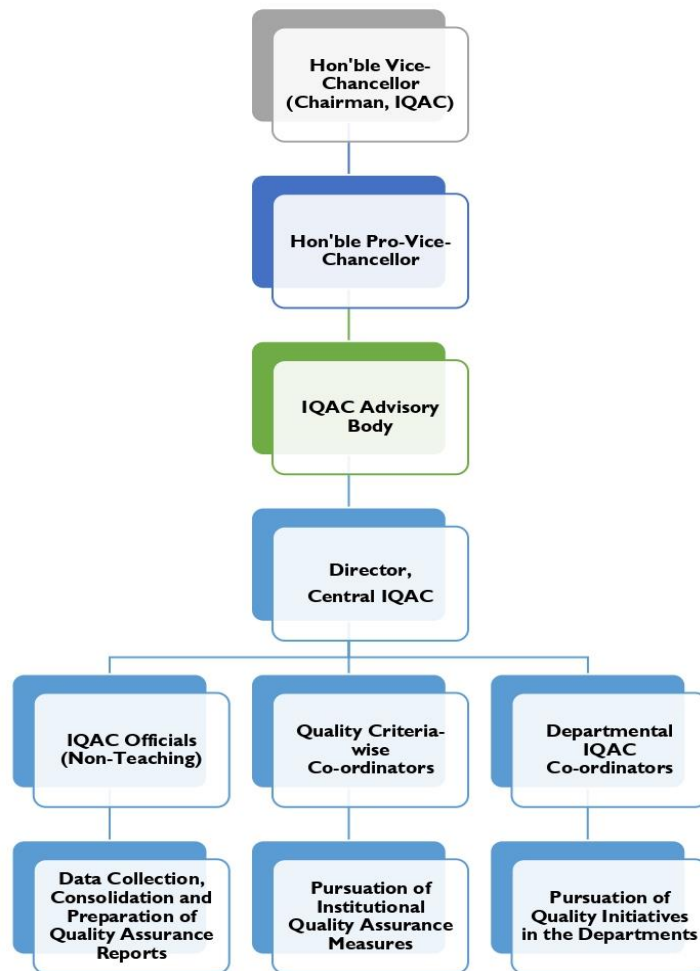
Organization Structure

IQAC Workflow

As per the revised guidelines of National Assessment and Accreditation Council (NAAC), Bangalore, Internal Quality Assurance Cell is created with Director of IQAC along with two dedicated non-teaching staff which is acting as a nodal agency for the quality culture within the institution. IQAC has an advisory body (including statutory officers /three to eight professors/ industry partners/student representative and Director, IQAC as member convener) under the chairmanship of Hon'ble Vice-Chancellor which regularly meets quarterly once. There are seven (07) pillars of quality enhancement defined by the NAAC.

- Criteria I : Curricular Aspects
- Criteria II : Teaching-Learning and Evaluation
- Criteria III : Research, Innovation and Extension
- Criteria IV : Infrastructure and Learning Resources
- Criteria V : Student Support and Progression
- Criteria VI : Governance, Leadership and Management
- Criteria VII : Institutional Values and Best Practices

Each quality criteria has an independent Co-ordinator who is looking after the overall growth and sustenance measures with respect to their criteria. Moreover, all of the academic departments has Department-wise Co-ordinators who are looking after the regular criteria-wise quality initiatives in the Departments. IQAC officials yearly collects, consolidates the data and prepare a comprehensive Quality Assurance Report which is regularly being submitted to NAAC, Bangalore for timely accreditations and assessment procedures. Following is the tree structure of the IQAC workflow:



Resource

Personnel		
University Details :		
Teaching Staff :	Non-Teaching Staff :	Technical Staff :
<i>Male : 147</i>	<i>Male : 876</i>	<i>Male : 157</i>
<i>Female : 51</i>	<i>Female : 157</i>	<i>Female : 17</i>
<i>Total : 198</i>	<i>Total : 1033</i>	<i>Total : 174</i>
IQAC Details :		
Director	Criteria Co-ordinators : 07	(Supporting & Technical)
<i>(Senior Professor from the University)</i>	Departmental IQAC Co-ordinators : 52	<i>Male : 01</i>
	<i>(Faculty Members from Departments)</i>	<i>Female : 01</i>
		<i>Total : 02</i>

Finance/ Budget

Expenditure Excluding Salary Component :
Rs. 4824.10 Lakh

Earmarked IQAC Budgetary Provisions (2019-20)

Rs. 50 Lakh (Recurring)

Rs. 25 Lakh (Non-recurring)

Facilities/ equipment under EQASA Project

<i>Description</i>	<i>Number</i>
<i>Video Conferencing Unit</i>	01
<i>All in One Desktop Computers</i>	08
<i>Laptop Lenovo Yogn 530</i>	02
<i>Bend Projector Model No. MH550</i>	01
<i>Samsung Galaxy Tablet</i>	02
<i>Sharp Television Set Model No. 2000U</i>	01